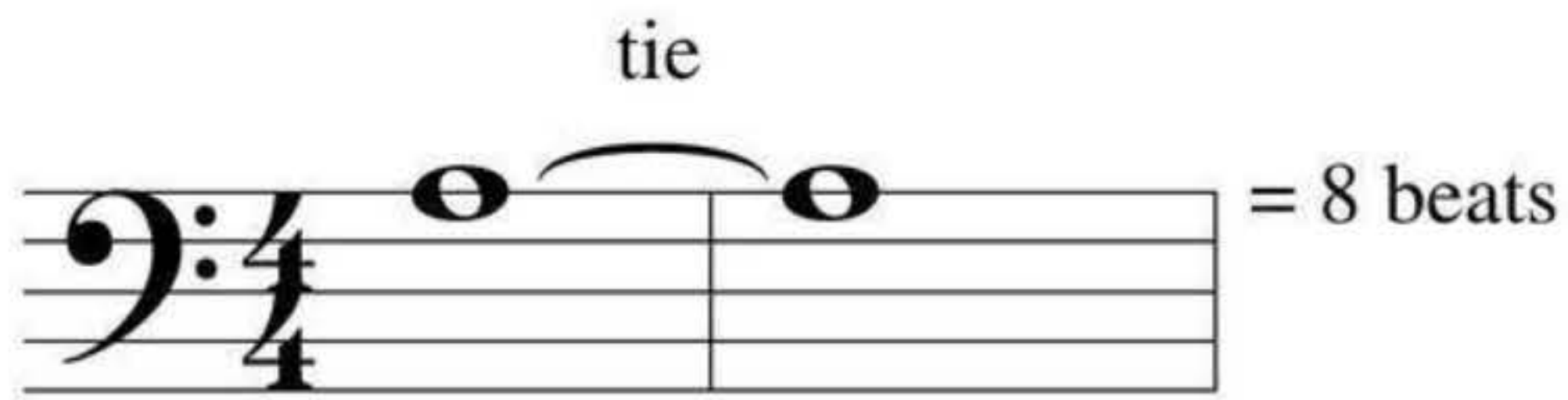


The Tie

A **tie** is a curved line connecting two notes on the same line or space. It means the note will be played *once*, but held for the length of both notes combined.



Gypsy Band

Lively 3 on ___?
1 on ___?

Count: 1 - 2 - 3 - 4

mf

2 on ___? 1

5 4
2

Teacher Duet: (Student plays 1 octave higher)

R.H. 4 2 5

L.H. 1 4

mp

5 5 1 3 4 3 3 1 3

9

13

g r o w l o u d e r *f*

1

5

Low A (See p. 15)

DISCOVERY



Identify each curved line in this piece as a **slur** or a **tie**.

9

4 2

4 3

5 1

5 1

5

1 *cresc.*

5

13

4

4

3

1

3

4

mf

4

3

2

1

5

f

5